

Lower Thames Crossing

5.1 Consultation Report Appendix D

Copy of the draft Statement of Community Consultation provided to local authorities

APFP Regulation 5(2)(q)

Infrastructure Planning
(Applications: Prescribed Forms and
Procedure)
Regulations 2009

Volume 5

DATE: October 2022

Planning Inspectorate Scheme Ref: TR010032
Application Document Ref: TR010032/APP/5.1

VERSION: 1.0

Lower Thames Crossing

5.1 Consultation Report

Appendix D Copy of the draft Statement of Community Consultation provided to local authorities

List of contents

Page number

Appendix D Preliminary draft Statement of Community Consultation consulted on with host local authorities and formal draft consulted on with host and neighbouring local authorities	1
---	----------

List of plates

	Page number
Plate D.1 Example email to host local authorities	1
Plate D.2 Preliminary draft Statement of Community Consultation	2
Plate D.3 A copy of the email sent to local authorities, notifying them of the commencement of formal consultation on the draft Statement of Community Consultation	18
Plate D.4 A copy of the Draft Statement of Community Consultation	19

Appendix D Preliminary draft Statement of Community Consultation consulted on with host local authorities and formal draft consulted on with host and neighbouring local authorities

- D.1.1 In February 2018 the Applicant shared a preliminary draft of the Statement of Community Consultation with host authorities, as described in Section 4.1 of the Consultation Report. Plate D.1 provides an example of the email of invitation sent to host local authorities and Plate D.2 provides a copy of the preliminary draft.
- D.1.2 Plate D.3 provides a copy of the email sent to local authorities, informing them of the commencement of the formal consultation period on the draft Statement of Community Consultation on 1 August 2018. Plate D.4 provides a copy of the formal draft Statement of Community Consultation.

Plate D.1 Example email to host local authorities

From: [REDACTED]
Sent: Tuesday, 20 February, 2018 5:02 PM
To: [REDACTED]
Subject: LTC draft Statement of Community Consultation

Dear All,

Following our discussions with you and other key stakeholders over the past few months we have developed a draft version of the Statement of Community Consultation (SoCC). This details our current thinking with regards to engaging with local stakeholders during the Statutory Consultation later on this year.

Please could you review the proposals laid out in the document (a copy has been attached) as we would like to discuss this further with you at a follow up meeting.

Please can you provide me with some dates and times that are suitable for you for a discussion and I will liaise with my team and make the suitable arrangements.

As you will be aware, this document is confidential so your discretion in keeping this so is appreciated.
If you have any questions please don't hesitate to contact me.

Kind regards
[REDACTED]

Stakeholder Engagement Lead
LTC CASCADE
Tel: +44 (0) 7526 1000
Mob: [REDACTED]
Working on behalf of Highways England

Highways England Customer Contact Centre
0300 123 5000
www.highways.gov.uk

Plate D.2 Preliminary draft Statement of Community Consultation



Statement of Community Consultation

Draft Statement of Community Consultation (SoCC)

(for informal engagement with host Local
Authorities)



Statement of Community Consultation

Date: 19 February 2018

Version: 2.0

DRAFT



Introduction

1. Highways England is publishing this Statement of Community Consultation (SoCC) in connection with its proposal to build a new crossing of the River Thames between Kent and Essex, east of Gravesend and Tilbury. The route would connect to the A2 in Kent, crossing under the River Thames by means of two bored tunnels, before joining the M25 south of Junction 29 (the Scheme).
2. The purpose of this document is to set out how we will consult the local community about the proposals. The SoCC provides details of where further information can be obtained or viewed and how comments on the proposed Scheme can be made.

The Application

3. The Scheme is classed as a Nationally Significant Infrastructure Project (NSIP) under the Planning Act 2008 as amended (PA 2008) which means that Highways England is required to submit an application to the Secretary of State for Transport for permission to build and operate the proposed Scheme. The permission is called a Development Consent Order (DCO). Highways England intends to submit the DCO application in 2019. The Planning Inspectorate will examine the application and make a recommendation to the Secretary of State, who will then make a decision as to whether the Scheme should proceed.
4. Highways England has a duty under section 47 of the PA 2008 to publish this statement setting out how it proposes to consult people living in the vicinity of the Scheme about the development. Highways England has consulted the local authorities responsible for the areas where the Scheme would be built about its plans to consult the local community on the proposals and has taken these views into account in developing this SoCC.
5. Government policy relating to the development of the national road network is set out in the National Networks National Policy Statement (NNNPS). The NNNPS provides the policy framework for this DCO application to be considered against. The document can be found here:
www.gov.uk/government/collections/national-networks-national-policy-statement
6. Under PA 2008 Highways England is required to consult on its proposals for the Scheme prior to the submission of the DCO application. Feedback from the consultation will be recorded and carefully considered by Highways England in developing its proposals for the Scheme. As part of the application process, the Secretary of State will consider whether Highways England's pre-application public consultation has been adequate. This pre-application consultation will be important in relation to the examination process that will follow after a DCO application has been accepted by the Planning Inspectorate. Therefore, the best time to provide feedback on this Scheme is now by taking part in this pre-application consultation.



7. You can find more information about the Planning Inspectorate and the Planning Act 2008 on the GOV.UK website: <http://infrastructure.planninginspectorate.gov.uk> or by calling the Planning Inspectorate on 0303 444 5000.

The Scheme

8. Highways England is developing proposals to build a new crossing of the River Thames. The proposed Lower Thames Crossing (LTC) will link Kent and Essex, located east of Gravesend and Tilbury. The proposed Scheme comprises the following key elements:
- Two bored tunnels under the River Thames
 - Dual three lane carriageway between the A2 and A13 junctions
 - Dual two lane carriageway north of the A13
 - The total length of the route, including M2/A2 and M25 widening, would be approximately 31km, with approximately 3.5km in tunnel.
9. The Scheme has the following project objectives:

Project Objectives	
Economic	<ul style="list-style-type: none"> • To support sustainable local development, regional economic growth in the medium to long-term • To be affordable to Government and users • To achieve value for money
Environment & Community	<ul style="list-style-type: none"> • To minimise adverse impacts on health and the environment
Transport	<ul style="list-style-type: none"> • To relieve the congested Dartford Crossing and approach roads and improve their performance by providing free flowing north-south capacity • To improve resilience of the Thames crossings and major road network • To improve safety



Consulting the community

10. In accordance with section 47 of P A 2008, Highways England is consulting people living in the vicinity of the proposed Scheme.
11. Highways England has already undertaken a consultation on the route options which took place between January and March 2016. Consultees were asked for their views on the proposed location of the crossing, route options north and south of the river, the combination of location, crossing type and routes and the need for additional junctions. More details are included in the Lower Thames Crossing Response to Consultation 2017, available to download from www.lowerthamescrossing.co.uk, on request from Highways England or at the information points during the consultation period at the locations detailed in this SoCC.
12. The consultation responses were taken into account in making a recommendation to Government about the choice of a Preferred Route to be taken forward to the next stage of development. Since the 2016 consultation and the announcement of the preferred route on 12 April 2017, the Scheme has been developed further. Highways England is now able to present the proposals in more detail and seek further views on the Scheme. We want to make sure that the local community, interest groups, businesses, visitors and road users have sufficient opportunity to understand the Scheme and comment on our proposals. To do this, we are holding a ten week consultation in 2018.
13. The Lower Thames Crossing is the type of development that requires an Environmental Impact Assessment to be carried out under the Infrastructure Planning (Environmental Impact Assessment) Regulations 2017. A Preliminary Environmental Information Report (PEIR) has been prepared and will form part of the consultation material. The PEIR includes preliminary information on the environmental impacts relating to the Scheme based on assessment work done to date. Highways England is continuing to gather environmental information which will result in a full Environmental Statement which will be produced and submitted as part of the DCO application. The PEIR will be available to download from www.lowerthamescrossing.co.uk, on request from Highways England or to view during the consultation period at the Deposit Locations detailed in this SoCC as part of the consultation materials.
14. Our consultation will include the following activities to ensure that the local community and other interested parties have an opportunity to view and comment on the proposals:

Method	Detail
Public Information Exhibitions	<p>A number of public information exhibitions will be held.</p> <p>The exhibitions will give people an opportunity to view scheme proposals and talk to the project team.</p> <p>The public will be informed of the exhibitions through channels including advertisements in appropriate local and national</p>



	<p>newspapers, via our website, email, media notices, social media and letters and leaflets delivered to local addresses.</p> <p>A list of provisional venues and dates for these exhibitions are detailed below. A full list of all venues considered when developing the public information exhibition plans is set out in Appendix 2. If an event is cancelled due to unforeseen circumstances or circumstances beyond the control of Highways England, it may be replaced with another similar event. In such an event Highways England will notify the public through a number of media channels.</p> <p>A consultation questionnaire will be available at the exhibition events for members of the public to record their comments. These can either be completed and left with the project team or sent back separately instead via the Freepost address noted below. Alternatively a copy of the consultation questionnaire is available on the scheme website where it can be completed and submitted online.</p>
Scheme website	<p>A full summary of the proposed Scheme, copies of the supporting documents and a consultation questionnaire will be made available on a dedicated website: www.lowerthamescrossing.co.uk</p>
Scheme summary leaflet	<p>A scheme leaflet and details of the planned public information events will be delivered to homes and businesses in the locality of the Scheme at the start of the consultation period. See Appendix 1 for the plan of the distribution area.</p>
Council and community / area forum briefings	<p>Local councils, parish councils and community / area forums within whose area the proposed Scheme will be carried out will be offered briefings to discuss the proposals.</p>
Stakeholder Forum briefings	<p>When invited, and where it is possible to do so, the project team will attend meetings of local community groups affected by the proposal.</p>
Ad hoc meetings	<p>Meetings with residents, businesses and interest groups about either the Scheme in general or particular issues can be arranged upon request to Highways England using the published email address, postal address or telephone number.</p>
Establishing Stakeholder Groups	<p>When invited, and where possible to do so, the scheme team will attend meetings of local community groups affected by the Scheme.</p>
Consultation feedback	<p>Written comments can be submitted either online at www.lowerthamescrossing.co.uk or by email to lrc@highwaysengland.co.uk</p>



	<p>or in writing to the following address:</p> <p>Freepost xxxxxxx Lower Thames Crossing Woodlands Manton Industrial Estate Manton Lane Bedford MK41 7LW</p> <p>Responses must be received by 23:45 on xxx xxx 2018.</p>
Equality engagement	<p>Highways England has worked with the Community Liaison Officers and the Community Voluntary Services of the affected Local Authorities to access local groups and community representatives to ensure as far as possible this consultation is accessible to hard to reach groups and the seldom heard.</p>
Press	<p>In accordance with section 47(6) of the Planning Act 2008, the proposed consultation will be advertised in a number of local and national newspapers prior to commencement of the consultation period. See Appendix 3 for details.</p>
Social media	<p>The consultation will be advertised on Twitter: @lowerthames A full summary of the proposed Scheme, copies of the supporting documents and a consultation questionnaire will be provided on a dedicated website: www.lowerthamescrossing.co.uk</p>

Deposit Locations and Information Points

15. Scheme summary information, this updated SoCC and other relevant technical documents will be available online at www.lowerthamescrossing.co.uk and will be available to view, during the consultation, at the deposit locations listed below. Deposit Locations and Information Points have not yet been approached and therefore the suggestions below are subject to availability and suitability. We welcome your comments.

Deposit locations

North of the river	Opening times
Brentwood Library New Road, Brentwood, Essex CM14 4BP	Monday 9am – 6pm Tuesday 9am – 6pm Wednesday 9am – 1pm Thursday 9am – 6pm Friday 9am – 6pm Saturday 9am – 5pm



Romford Central Library, St Edwards Way, Romford RM1 3AR	Monday 10am – 8pm Tuesday 9am – 5pm Wednesday 9am – 5pm Thursday 10am – 8pm Friday 9am – 5pm Saturday 10am – 4pm
The Beehive, Voluntary and Community Resource Centre, West Street, Grays, Essex RM17 6XP	Opening times vary, please call 01375 389890 for details
Tilbury Hub, Civic Square, Tilbury, Essex RM18 8AD	Monday 10am – 5pm Wednesday 10am – 5pm Friday 10am – 5pm Saturday 10am – 1pm
South of the river	
Chatham Library Community Hub, Chatham, Gun Wharf, Dock Road, Chatham, Kent ME4 4TX	Monday – Friday 9am – 6pm Saturday 9am – 5pm
Dartford Library Central Park, Market Street, Dartford, Kent DA1 1EU	Monday – Wednesday 8.30am – 6pm Thursday 8.30am – 8pm Friday 8.30am – 6pm Saturday 9am – 5pm
Gravesend Library Windmill Street, Gravesend, Kent DA12 1BE	Monday – Friday 9am – 6pm Saturday 9am – 5pm
Kent County Council, County Hall, Maidstone ME14 1XQ	Monday – Friday 9am – 5pm

16. In addition, the consultation brochure and the consultation questionnaire will be made available at the information points listed below:

Information points (may be expanded)

North of the river	Opening times
Aveley Library Purfleet Road, Aveley, RM15 4DJ	Tuesday 10am – 1pm, 2 – 5pm Thursday 10am – 1pm, 2 – 5pm Saturday 10am – 1pm
Acorns Community Hub, Headon Hall, Crawford Avenue, Stifford Clays RM16 2AS	Wednesday 10am – 1pm Thursday 1 – 4pm
Belhus Library South Ockendon Centre, Derry Avenue, South Ockendon, RM15 5DX	Monday to Saturday, 10am – 5pm
Brentwood Library New Road, Brentwood, Essex CM14 4BP	Monday 9am – 6pm Tuesday 9am – 6pm Wednesday 9am – 1pm Thursday 9am – 6pm



Dartford Library Central Park, Market Street, Dartford, Kent DA1 1EU	Monday – Wednesday 8.30am – 6pm Thursday 8.30am – 8pm Friday 8.30am – 6pm Saturday 9am – 5pm
Gravesend Library Windmill Street, Gravesend, Kent DA12 1BE	Monday – Friday 9am – 6pm Saturday 9am – 5pm
Higham Library Villa Road, Higham, Rochester, Kent ME3 7BS	Monday 9am – 1pm Tuesday 2pm – 5.30pm Wednesday 9am – 1pm Thursday 2pm – 5.30pm Friday 9am – 1pm Saturday 10am – 2pm
Marling Cross Library 266 MacKenzie Way, Gravesend DA12 5TY	Tuesday 9.30am – 1pm, 2pm – 5pm Thursday 9.30am – 1pm, 2pm – 5pm Friday 2pm – 5pm Saturday 2pm – 4pm
Meopham Library Wrotham Rd, Meopham, Gravesend, Kent DA13 0AH	Monday – Friday 9am – 1pm, 2pm – 5pm Saturday 9am – 2pm
Shorne Woods Country Park, Brewers Road, Shorne, Gravesend DA12 3HX	Monday – Sunday 9am - dusk
Strood Library 133 High St, Rochester ME2 4TJ	Monday – Friday 9am – 6pm Saturday 9am – 5pm

Public Information Events – Provisional timetable of venues and dates

17. An initial schedule of Public Information Events has been drafted for comment and feedback. We have ensured there is an even split of events between the North and South of the river as well as a mix of days of the week (to include Saturdays). This table will be expanded to give full addresses and times once plans are confirmed.
18. If an event is cancelled due to unforeseen circumstances or circumstances beyond the control of Highways England it may be replaced with another similar event.
19. It is the intention to hold events in approximately 15 venues. For some areas we will hold more than one event in order to reach a broad section of the population eg a weekday and a weekend. For weekday events we intend to be open 2-9pm following feedback from our last consultation and feedback from our community engagement team.
20. Venues have not yet been approached and therefore the suggestions below are subject to availability and suitability. We welcome your comments. The full shortlist of venues considered can be found in Appendix 2.

Venue	Date	Area / Zone
Chalk Village Hall		Gravesend / A2



	Friday 9am – 6pm Saturday 9am – 5pm
Chadwell Library Brentwood Rd, Chadwell St Mary, Grays RM16 4JP	Monday 10am – 7pm Tuesday 10am – 5pm Wednesday 10am – 5pm Thursday 10am – 7pm Friday 10am – 5pm Saturday 10am – 1pm, 2 – 5pm
Corringham Library St John's Way, Corringham, Stanford-le-Hope, SS17 7LJ	Monday 10am – 5pm Tuesday 10am – 5pm Wednesday 10am – 1pm Thursday 10am – 5pm Friday 10am – 5pm Saturday 10am – 5pm
East Tilbury Library Princess Avenue, East Tilbury, Essex RM18 8ST	East Tilbury library is closed until further notice due to fire. Library staff will be at East Tilbury post office on Tuesdays from 10am to 1pm, and Thursdays from 2pm to 5pm.
The Beehive, Voluntary and Community Resource Centre, West Street, Grays, Essex RM17 6XP	Opening times vary, please call 01375 389890 for details
Tilbury Hub, Civic Square, Tilbury, Essex RM18 8AD	Monday 10am – 5pm Wednesday 10am – 5pm Friday 10am – 5pm Saturday 10am – 1pm
Upminster Library 26 Corbets Tey Road, Upminster RM14 2BB	Monday 10am – 8pm Tuesday 9am – 5pm Wednesday 9am – 5pm Thursday 10am – 8pm Friday 9am – 5pm Saturday 10am – 4pm
South of the river	
[Cascade Leisure Centre, Thong Lane, Gravesend DA12 4LG]	Monday – Friday 6am – 10pm Saturday 8am – 6pm Sunday 8am – 8pm
Coldharbour Library Coldharbour Road, Northfleet, Gravesend, Kent DA11 8AE	Monday 2pm – 5.30pm Tuesday 9am – 5.30pm Thursday 2pm – 5.30pm Friday 9am – 5.30pm Saturday 9am – 5pm
Cuxton Library Bush Rd, Cuxton, Rochester, Kent ME2 1EY	Tuesday 9am – 1pm Thursday 2pm – 6pm Friday 2pm – 6pm Saturday 10am – 4pm



Lakeside Shopping Centre		Tunnel North
Lakeside Shopping Centre		Tunnel North
Riverview School / Gravesham Rugby Club		Gravesend / A2
Havering College		M25 area
Dartford Hilton		Dartford
Temple Hill Community Centre, Dartford		Dartford
Orsett Hall Hotel		A13 area
Eastgate EventsVenue		Gravesend / A2
Dunton Hills Golf Club, West Horndon		M25 area
St George Hotel, Rochester		M2
Towngate Theatre, Basildon		A13 area
Kent Life, Sandling, Maidstone		A229
West Tilbury Village Hall		Tunnel North
The Beehive, Grays		Tunnel North
Hurst Community Centre, Bexley		Dartford

Next steps

21. All comments received during the consultation period will be recorded and carefully considered by Highways England and will be taken into account in developing the Scheme proposal. An explanation of how comments received have shaped and influenced our proposals including feedback received at the previous stage of consultation, will be reported in a Consultation Report prepared by Highways England which will accompany the DCO application as required by Section 37(3) (c) of the P A 2008. The Planning Inspectorate will decide whether the application meets the required standards to proceed to examination, and will determine whether Highways England’s pre-application consultation has been adequate.
22. Highways England needs to collect and assess responses to the consultation before submitting the DCO application to the Planning Inspectorate. In order to allow sufficient time to do this, comments must be received by 23:45 by xx xxxx 2018.
23. If you want to contact us or find out more about this scheme or obtain copies of consultation documents, you can:

Visit the scheme webpage: www.lowerthamescrossing.co.uk

E-mail us: lowerthamescrossing@highways.gsi.gov.uk

Call us: 0300 123 5000

Write to us: Freepost xxxx, Lower Thames Crossing, Woodlands, Manton Industrial Estate, Manton Lane, Bedford MK41 7LW



Data protection

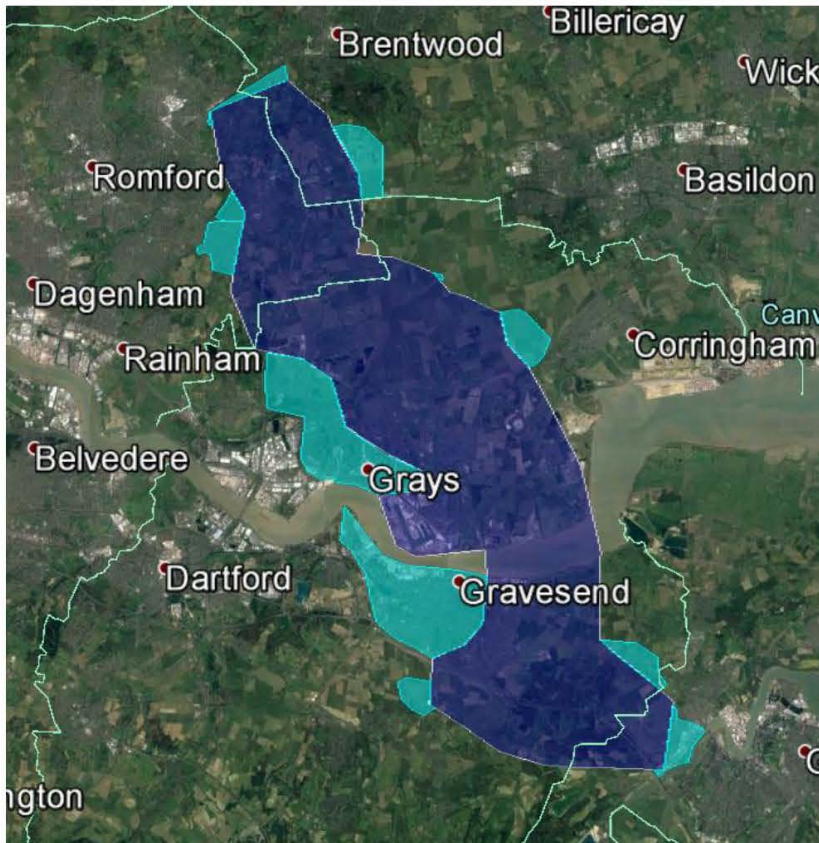
Your comments will be analysed by Highways England and any of its appointed agents. Copies may be made available in due course to the Secretary of State, the Planning Inspectorate and other relevant statutory authorities so that your comments can be considered as part of the Development Consent Order (DCO) application process. We will request that your personal details are not placed on public record and will be held securely by Highways England in accordance with the Data Protection Act 1998 and will be used solely in connection with the consultation process and subsequent DCO application and, except as noted above, will not be passed to third parties.

Date: DD/ MM/ YEAR

DRAFT

Appendices

Appendix 1 – Consultation zone (draft imagery)



The above map shows the plan for our consultation distribution zone. The dark blue zone covers a 2km radius around the route alignment. The light blue zones are extensions where we can distribute to entire communities rather than distributing to only parts of the zone. The extensions include (from north to south):

- Harold Wood/Great Warley
- Little Warley and Childerditch
- Entire streets in Upminster
- Hamlet south of Bulphan
- Hordon on the Hill
- South Ockendon, North Stifford, and Grays
- Gravesend town
- Higham
- Istead Rise
- Suburb of Strood



Appendix 2 – Shortlist of all potential venues for Public Information Events:

Area / Zone	Potential venues	Address
Gravesend	Gravesend Old Town Hall	High Street, Gravesend, Kent, DA11 0AZ
	Shorne Village Hall	16 The Street, Shorne, Kent, DA12 3EA
	Southern Valley Golf Club	Thong Lane, Gravesend, Kent, DA12 4LT
	Manor Hotel, Gravesend	Hever Court Road, Singlewell, Gravesend, Kent, DA12 5UQ
	Inn on the Lake	Shorne, Gravesend, Kent, DA12 3HB
	Riverside Community Centre	Dickens Road, Gravesend, Kent, DA12 2JY
	Gravesend Masonic Hall	25 Wrotham Road, Gravesend, Kent, DA11 0PA
	Eastgate Events Venue	141 Springhead Parkway, Northfleet, Gravesend, Kent, DA11 8AD
	Gravesham Borough Council Civic Centre	Windmill Street, Gravesend, Kent, DA12 1AU
	Cascade Leisure Centre	Thong Lane, Gravesend, Kent, DA12 4LG
	Nurstead Court	Nurstead Church Lane, Meopham, Kent, DA13 9AD
	Dartford	Dartford Hilton
Bluewater Shopping Centre		Bluewater Parkway, Dartford, Kent, DA9 9ST
Hurst Community Centre		Hurst Place, Hurst Road, Bexley, Kent, DA5 3LH
Temple Hill Community Centre		Temple Hill Square, Dartford, Kent, DA1 5HY
Orchard Shopping Centre		High Street, Dartford, Kent, DA1 1DN
A13 area	The Old Regent Ballroom	19 Corringham Road, Stanford-le-Hope, Essex, SS17 0AQ
	Stanford Rugby Club	Grove Road, Stanford-le-Hope, Essex, SS17 0ED
	Orsett Golf Club	Brentwood Road, Orsett, Essex, RM16 3DR
	Orsett Hall Hotel	Prince Charles Avenue, Orsett, Essex, RM16 3HS
	Pegasus Country Club	Herd Lane, Corringham, Essex, SS17 9BJ



	Towngate Theatre	St Martin's Square, Basildon, Essex, SS14 1DL
	Civic Hall	Blackshots Lane, Grays, Essex, RM16 2JU
M25 area	Thames Chase, Forest Centre	Broadfields, Pike Lane, Upminster, RM14 3NS
	Top Meadow Golf Club & Hotel	Fen Lane, North Ockendon, Upminster, RM14 3PR
	Upminster Junior School	St Mary's Lane, Upminster, Essex, RM14 3BS
	Dunton Hills Golf Club	Tilbury Road, West Horndon, Brentwood, CM13 3LT
	Langdon Hills	Lower Dunton Rd, Horndon on the Hill, Upminster, RM14 3TY
	Havering College	Ardleigh Green Road, Hornchurch, , RM11 2LL
	West Horndon Village Hall	Thorndon Avenue, West Horndon, Brentwood, CM13 3TP
	Derougemont Manor	Great Warley Street, Brentwood, Essex, CM13 3JP
Tunnel north	West Tilbury Village Hall	Rectory Road, West Tilbury, Essex, RM18 8UD
	The Beehive	West Street, Grays, Essex, RM17 6XP
	East Tilbury Primary School	Princess Margaret Road, East Tilbury, Essex, RM18 7QB
	Lansdowne Primary Academy	Lansdowne Road, Tilbury, Essex, RM18 7BE
	Lakeside Shopping Centre	West Thurrock Way, Grays, Essex, RM20 2ZP
M2	The Royal Function Rooms	12 Star Hill, Rochester , Kent, ME1 1XB
	St George Hotel	7-8 New Road Avenue, Rochester , Kent, ME4 6BB
	Corn Exchange	
A229	Cobtree Manor Park Golf Course	Chatham Road, Maidstone, Kent, ME14 3AZ
	Maidstone Museum	St. Faith's Street, Maidstone, Kent, ME14 1LH
	Kent Life	Lock Lane, Sandling, Maidstone, Kent, ME14 3AU
	Maidstone County Hall	Sessions House County Rd, Maidstone ME14 1XQ
	Bridgewood Manor Hotel	Walderslade Woods, Chatham ME5 9AX
	Holiday Inn	Maidstone Road, Rochester ME5 9SF



Appendix 3 – list of potential local and national newspapers

Below is a shortlist of local and national newspapers we are considering to advertise and or supply press notices for consultation.

Local Papers

Basildon Recorder
Brentwood Gazette
Essex Chronicle
Essex Enquirer
Gravesend & Dartford Messenger
Kent & Sussex Courier
Kent Messenger
Kent on Sunday
Kentish Times & Reporter
KM Medway Package
Romford & Brentwood Recorder
Thanet KM Extra
Thurrock Gazette

National Papers

2 national papers depending on circulation in vicinity of proposed Scheme

Plate D.3 A copy of the email sent to local authorities, notifying them of the commencement of formal consultation on the draft Statement of Community Consultation

From: [REDACTED]
Sent: 01 August 2018 12:10
To: [REDACTED]
Cc: [REDACTED]
Subject: Formal consultation of the Lower Thames Crossing draft Statement of Community Consultation
Importance: High

Hi Anna,

Please find attached the Lower Thames Crossing Section 47 (S47) letter and draft Statement of Community Consultation (SoCC), which sets out how we will consult with the community about the project.

In addition to sending the S47 letter and draft SoCC to you by email, we have also posted paper copies to you which you will receive shortly.

With this email we are now inviting comments on the draft SoCC, with the consultation on the document formally starting on **Wednesday 01 August**, and closing on **Sunday 2 September 2018**.

Please submit any comments you may have by responding to this email address.

The draft SoCC includes revisions based on feedback from directly affected local authorities.

Given the draft status of the SoCC, some elements of the consultation - such as event locations and times - are provisional. These elements are subject to constraints such as logistics, availability, cost and project schedules.

We look forward to receiving your comments.

Kind regards

[REDACTED]

Stakeholder Engagement Lead
LTC CASCADE

Tel: [REDACTED]
Mob: [REDACTED]

Working on behalf of Highways England

Highways England Customer Contact Centre
0300 123 5000

www.highways.gov.uk

Plate D.4 A copy of the Draft Statement of Community Consultation



Lower Thames Crossing – Draft Statement of Community Consultation

Lower Thames Crossing

Draft Statement of Community Consultation (SoCC)

Ref: HE540039-CJV-GEN-GEN-ANN-EXT-00002



Contents

Introduction	3
The application	3
The project.....	4
Consulting the community	5
Consultation period.....	9
Receiving a response form	9
How to respond.....	9
Public information event locations, dates and times.....	10
Deposit locations and opening hours.....	10
Information points and opening hours.....	12
Next steps.....	14
Data privacy notice	14
Appendix 1: Leaflet distribution area.....	146
Appendix 2: Statutory notices and paid advertising	17

DRAFT



Introduction

1. Highways England is publishing this Statement of Community Consultation (SoCC) in connection with our proposals to construct, operate and maintain the Lower Thames Crossing, a proposed new road and tunnel that would connect Kent, Thurrock and Essex. The route would connect to the A2 in Kent, crossing under the River Thames by means of two bored tunnels, before joining the M25 south of junction 29. In this document, the Lower Thames Crossing proposals are referred to as 'the project'.
2. The purpose of this SoCC is to set out how we will consult the community about the project, including details of where information can be viewed and how people can comment on the project.

The application

3. The project is classed as a Nationally Significant Infrastructure Project (NSIP) under the Planning Act 2008 (as amended). This means that we are required to submit an application to the Secretary of State for Transport for permission to construct the project.
4. This permission is called a Development Consent Order (DCO), and we plan to submit our DCO application in 2019. The Planning Inspectorate will appoint an examining authority to scrutinise our application and make a recommendation to the Secretary of State, who will then make a decision as to whether the DCO should be authorised.
5. Government policy relating to the development of the national road network is set out in the National Policy Statement for National Networks (NPS). The NPS provides the primary policy framework for this DCO application to be considered against, and can be found at www.gov.uk/government/collections/national-networks-national-policy-statement.
6. We have a duty under section 47 of the Planning Act 2008 to publish this SoCC, setting out how we plan to consult with people living in the vicinity of the land to which our proposed DCO application relates. In preparing this SoCC, we have consulted those local authorities in the areas where the project is proposed to be built, those that share a boundary, and other local authorities in Kent and Essex, explaining how we plan to consult the community.
7. We have taken the views of these local authorities into account in developing this SoCC.
8. Under the Planning Act 2008, we are required to consult on our proposals for the project before submitting the DCO application. Feedback from the consultation will be recorded and carefully considered in developing our proposals for the project. As such, the pre-application consultation is an important opportunity for the community to provide feedback on the project. As part of the application process, the Planning Inspectorate will consider whether the pre-application



public consultation that we have undertaken has been satisfactory and fulfils all of the statutory criteria.

9. You can find more information about the Planning Inspectorate and the Planning Act 2008 at <http://infrastructure.planninginspectorate.gov.uk> or by calling the Planning Inspectorate on 0303 444 5000.

The project

10. As noted, the project is a proposed new crossing of the Thames Estuary linking Kent, Thurrock and Essex. The road would link the tunnel and the A2 in Kent with junction 29 of the M25 in the London Borough of Havering, and includes the following elements:

- A twin-bore tunnel with three lanes in each direction, carrying traffic beneath the River Thames.
- Approximately 17 miles of new road connecting the tunnel to the existing road network.
- Up to three lanes in both directions on the Lower Thames Crossing route with vehicles travelling up to 70 miles per hour.
- Improvements to the M25, A2 and A13, where the Lower Thames Crossing connects to the existing road network.
- New structures and changes to existing ones (including bridges, buildings, tunnel portals, viaducts, and utilities such as electricity pylons) along the length of the new road.
- A charging system similar to that at the Dartford Crossing to help manage traffic demand.

11. The project has the following objectives:

Economic:

- To support sustainable local development, regional economic growth in the medium to long-term
- To be affordable to Government and users
- To achieve value for money

Environmental and community:

- To minimise adverse impacts on health and the environment



Transport:

- To relieve the congested Dartford Crossing and approach roads and improve their performance by providing free-flowing north-south capacity
- To improve resilience of the Thames crossings and major road network
- To improve safety

Consulting the community

12. In accordance with section 47 of the Planning Act 2008, we are consulting people living in the vicinity of the land to which our proposed DCO application relates.
 13. Two non-statutory public consultations on alternative route options have already been held. The Department for Transport undertook a consultation between 21 May and 16 July 2013 presenting the case for a new crossing and inviting views on three potential locations and one variant. The Government response to this consultation is available at <https://www.gov.uk/government/publications/lower-thames-crossing-government-response-to-consultation-on-options>. The second public consultation took place from 26 January to 24 March 2016 and asked for views on Highways England's proposed location of the crossing, route options north and south of the River Thames, and the need for additional junctions. Details of this consultation can be found in the *Lower Thames Crossing Response to Consultation 2017*, which is available to download from www.lowerthamescrossing.co.uk, with paper copies available on request from Highways England. See below for details of how to obtain paper copies of consultation documents.
 14. Responses to the previous consultations were taken into account before making a recommendation to Government about the choice of a "Preferred Route" to be taken forward to the next stage of development, leading to a Preferred Route Announcement on 12 April 2017. Since then, the project has been subject to further design development, resulting in some changes to the proposals presented in the Preferred Route Announcement. We are now able to present the project in more detail and seek further views on it. We want to make sure that the local community, interest groups, businesses, visitors and road users have sufficient opportunity to understand the project and comment on our proposals. To do this, we are holding a ten-week consultation in autumn 2018.
 15. The project constitutes 'Environmental Impact Assessment (EIA) development' as defined by the Infrastructure Planning (Environmental Impact Assessment) Regulations 2017 ("the 2017 Regulations"). An EIA is therefore being carried out to ensure that the likely significant effects of the proposed development are properly understood and to ascertain whether appropriate mitigation should be put in place. Our DCO application will be accompanied by an Environmental Statement containing the findings of the EIA.
 16. In accordance with regulation 12 of the 2017 Regulations, a *Preliminary Environmental Information Report (PEIR)*, which sets out survey methodologies
-



and results, and the potential likely significant environmental effects of the project, has been prepared to allow consultees to take an informed view on these matters. The PEIR therefore forms an important part of this consultation. As set out below, it is being publicised as part of the suite of consultation documents and will be available to download from our consultation website (URL to be confirmed), with paper copies available to view at the deposit locations listed in this SoCC. See below for details as to how to buy a paper copy of the PEIR. Comments on the matters covered in the PEIR can be made via the consultation response form.

17. The following documents will be made available during consultation:

- Consultation booklet
- Consultation leaflet
- Response form
- Statement of Community Consultation (SoCC)
- The Case for the Lower Thames Crossing
- Design, Construction and Operation of the Lower Thames Crossing
- Large format maps: General arrangements 1:10,000
- Map books
- Environmental Masterplan
- Preliminary Environmental Information Report (PEIR)
- Preliminary Environmental Information Report (PEIR): Non-technical Summary
- Preliminary traffic report
- Preliminary traffic report: non-technical summary
- Section 47 Notice
- Section 48 Notice
- Your Property and Blight
- Your Property and Compulsory Purchase
- Your Property and Discretionary Purchase



18. We will use a range of channels during the consultation to ensure people have an opportunity to view and comment on the proposals:

Channel	Details
Website	At the start of the consultation, we will make information about the project, including this SoCC, available on the consultation website. We will also provide the opportunity to download the consultation documents, which provide a higher level of detail about the proposals and their impacts – for example, comprehensive information about the predicted environmental and traffic impacts. Website visitors will be encouraged to fill in the online consultation response form to capture their feedback on the project.
Leaflet	At the start of the consultation, we will send a leaflet summarising the project, including details of the planned public information events, to all properties in the vicinity of the project. See Appendix 1 for a map showing the proposed distribution area for the leaflet.
Email	At the start of the consultation, we will send emails to relevant individuals, businesses and organisations notifying them of the consultation and encouraging them to respond. All email data is held and used in accordance with the relevant data protection legislation.
Social media	There will be a social media campaign in support of the consultation.
Statutory notices	In accordance with sections 47 and 48 of the Planning Act 2008, we will place notices publicising the consultation in appropriate local and national newspapers at the start of the consultation period. See Appendix 2 for details.
Media	We will place advertisements publicising the consultation in appropriate local newspapers prior to the start of the consultation period. See Appendix 2 for more details. We will also send out press releases providing details of the consultation to encourage media to publicise the consultation.
Public information events	We will hold a series of public information events where people will have an opportunity to view the project proposals and talk to the project team. There will be events at various locations along, or in the vicinity of, the route of the project. A provisional list of event locations, dates and times is provided below. The exact locations, dates and times of the public information events will be published in the local press, and will be included in the consultation leaflet (as described above). Press notices that also include detailed event information will be published before the start of the consultation period. At some locations, we will hold more than one event in order to reach more people. Based on feedback from previous



	<p>consultations and from our community engagement team, our weekday events will typically run from 2pm-9pm, while Saturday events will typically run from midday-6pm.</p> <p>While we will endeavour to hold all of these events at the published locations and times, it may not always be possible to do so due to unforeseen circumstances or events beyond our control. In the unlikely case that we have to change event details or cancel events, we will inform the public of those changes, including updating the consultation website.</p>
Additional promotional activity	We are planning additional promotional activity to raise awareness of the consultation including: out of home advertising; additional newspaper advertising; leaflet distribution in high-footfall locations such as shopping centres and transport hubs; and visiting some locations in a mobile information unit.
Local authority briefings	We will offer face-to-face briefings to discuss the proposals with local authorities and parish councils in the areas affected by the project.
Community and stakeholder briefings	We will offer to meet community representatives and stakeholder groups in the areas affected by the project to discuss the proposals.
Ad hoc meetings	Where resources permit, we will attend meetings when invited by community groups, businesses and interest groups to discuss the project. These meetings can be requested by contacting us via email, post or telephone.
Deposit locations	During consultation, we will make paper copies of all the consultation documents (see the list above, which includes the SoCC, the PEIR and other technical documents) available to view at the deposit locations listed below. At these locations, there will also be consultation booklets and response forms for members of the public to take away.
Information points	We will make consultation booklets and response forms available for members of the public to take away at the information points listed below.
Paper copies of project information on request	A printed copy of the consultation booklet and the PEIR can be purchased on request. Due to the size of the paper documents, a charge of £135 (plus VAT and P&P) will be made for each copy requested.
Alternative formats	We will consider requests for alternative document formats (for example, translations, large print or Braille) to enable all members of the public to view and comment on the consultation documents where it is reasonably practical to do so.
Customer contact centre	Our customer contact centre will be able to provide information about the consultation to members of the public. We will brief local authority customer contact centres so they are also in a position to provide information about the consultation.



Consultation period

18. The consultation will run for 10 weeks, starting at 9am on launch day and finishing at 11.59pm on its final day. We are aiming to launch the consultation during the week commencing Monday 8 October 2018, with it closing 10 weeks later during the week commencing Monday 17 December 2018.

Receiving a consultation response form

19. You can receive a response form by downloading it from the consultation website or picking it up free of charge from:

- Public information and other promotional events
- Information points
- Deposit locations

You can also ask us to send you a form by:

- Emailing us at: lrc@highwaysengland.co.uk
- Calling us on: 0300 132 5000

How to respond

20. Please send your completed response form and/or separate comments to one of the following response channels. Each of the response channels is free to use. Highways England cannot guarantee that responses sent to any other address will be included in our analysis and reporting.

21. The deadline for accepting responses to the consultation is 11.59pm on XX December 2018 (date to be confirmed, see above). Please ensure that your response is sent before this deadline.

Method	Details
Online response form	Fill in the online response form on our consultation website.
Freepost	Post your response form or comments to our Freepost address (details to be confirmed). The Freepost address is the only text needed on the envelope, and no stamp is required.
Email	Email your comments to xxxxx@xxxxxxxx.xxx (email address to be confirmed)
Public information events	Fill in and submit a paper response form at one of our public information events. Please note that this may not be possible at other types of event.



Public information event locations, dates and times

Location	Date and time
Basildon Towngate Theatre, St Martins Square, Basildon, SS14 1DL	Thursday 25 October 2pm – 9pm
Bluewater Shopping Centre, Bluewater Parkway, Greenhithe, Kent, DA9 9ST	Saturday 20 October midday – 6pm Sunday 21 October midday – 6pm
Brandon Groves Community Club, Brandon Groves Avenue, South Ockendon, RM15 6TD	Friday 16 November 2pm – 9pm
Chadwell St Mary Village Hall, Waterson Road, Chadwell St Mary, Essex, RM16 4NX	Friday 7 December 2pm – 9pm
Chalk Parish Hall, Pirrip Close, Gravesend, Kent, DA12 2ND	Monday 22 October 2pm – 9pm
Civic Hall, Blackshots Lane, Grays, Essex, RM16 2JU	Tuesday 6 November 2pm – 9pm
Dartford (venue to be confirmed)	Date and time to be confirmed
Doubletree Dartford Bridge, Masthead Close, Crossways Bus. Park, Dartford, Kent, DA2 6QF	Monday 3 December 2pm – 9pm
Gravesham Civic Centre, Windmill Street, Gravesend, Kent, DA12 1AU	Wednesday 21 November 2pm – 9pm
Havering College of Further and Higher Education, Arleigh Green Road, Hornchurch, Essex, RM11 2LL	Monday 26 November 2pm – 9pm
Holiday Inn Brentwood M25 J28, Brook Street, Brentwood, Essex, CM14 5NF	Wednesday 28 November 2pm – 9pm
Lakeside Shopping Centre, West Thurrock Way, Grays, RM20 2ZP	Saturday 27 October midday – 6pm Sunday 28 October midday – 6pm
Linford Methodist Church, East Tilbury Road, Linford, Essex, SS17 0QQ	Wednesday 14 October 2pm – 9pm
New Windmill Hall, St Mary's Lane, Upminster, Essex, RM14 2QH	Saturday 17 November midday – 6pm
Orsett Hall Hotel, Prince Charles Avenue, Orsett, Essex, RM16 3HS	Monday 15 October 2pm – 9pm Tuesday 16 October 2pm – 9pm
Rochester Corn Exchange, Northgate, Rochester, Kent, ME1 1LS	Wednesday 5 December 2pm – 9pm
Shorne Village Hall, 16 The Street, Shorne, Kent, DA12 3EA	Saturday 3 November midday – 6pm



St Mary Magdalene Church, Church Lane, North Ockendon, Essex, RM14 3QH	Thursday 22 November 2pm – 9pm
West Horndon Village Hall, Thorndon Avenue, West Horndon, Brentwood, CM13 3TP	Wednesday 24 October 2pm – 9pm

Deposit locations and opening times (excluding bank holidays)

North of the River Thames	Opening times
Brentwood Library, New Road, Brentwood, Essex, CM14 4BP	Monday 9am – 6pm Tuesday 9am – 6pm Wednesday 9am – 1pm Thursday 9am – 6pm Friday 9am – 6pm Saturday 9am – 5pm
Grays Library, Thameside Complex, Orsett Road, Grays, Essex, RM17 5DX	Monday 9am - 7pm Tuesday 9am - 5pm Wednesday 9am - 5pm Thursday 9am - 7pm Friday 9am - 5pm Saturday 9am - 1pm
Romford Central Library, St Edwards Way, Romford, Essex, RM1 3AR	Monday 10am – 8pm Tuesday 9am – 5pm Wednesday 9am – 5pm Thursday 10am – 8pm Friday 9am – 5pm Saturday 10am – 4pm
Tilbury Hub, Civic Square, Tilbury, Essex RM18 8AD	Monday 10am – 5pm Wednesday 10am – 5pm Friday 10am – 5pm Saturday 10am – 1pm
South of the River Thames	
Dartford Library, Central Park, Market Street, Dartford, Kent, DA1 1EU	Monday – Wednesday 8.30am – 6pm Thursday 8.30am – 8pm Friday 8.30am – 6pm Saturday 9am – 5pm
Gravesend Library, Windmill Street, Gravesend, Kent, DA12 1BE	Monday – Friday 9am – 6pm Saturday 9am – 5pm
Maidstone Library, James Whatman Way, Maidstone, Kent, ME14 1LQ	Monday – Friday 9am – 6pm Saturday 9am – 5pm



Rochester Library, Community Hub Rochester, Eastgate, Rochester, ME1 1EW	Monday – Friday 9am – 6pm Saturday 9am – 4pm
--	---

Information points and opening times (excluding bank holidays)

Location	Opening times
Aveley Library, Purfleet Road, Aveley, Essex, RM15 4DJ	Tuesday 10am – 1pm, 2 – 5pm Thursday 10am – 1pm, 2 – 5pm Saturday 10am – 1pm
Belhus Library, South Ockendon Centre, Derry Avenue, South Ockendon, RM15 5DX	Monday to Saturday 10am – 5pm
Blackshots Library, Blackshots Lane, Grays, RM16 2JU	Monday 10am – 1pm, 2pm – 5pm Tuesday 10am – 1pm, 2pm – 5pm Thursday 10am – 1pm, 2pm – 5pm Friday 10am – 1pm, 2pm – 5pm Saturday 10am – 1pm
Chadwell Library, Brentwood Road, Chadwell St Mary, Grays, Essex, RM16 4JP	Monday 10am – 7pm Tuesday 10am – 5pm Wednesday 10am – 5pm Thursday 10am – 7pm Friday 10am – 5pm Saturday 10am – 1pm, 2pm – 5pm
Coldharbour Library, Coldharbour Road, Northfleet, DA11 8AE	Monday 2pm – 5.30pm Tuesday 9am – 5.30pm Thursday 2pm – 5.30pm Friday 9am – 5.30pm Saturday 9am – 5pm
Corringham Library, St John's Way, Corringham, SS17 7LJ	Monday 10am – 5pm Tuesday 10am – 5pm Wednesday 10am – 1pm Thursday 10am – 5pm Friday 10am – 5pm Saturday 10am – 5pm
Cuxton Library, Bush Road, Cuxton, ME2 1EY	Tuesday 9am – 1pm Thursday 2pm – 6pm Friday 2pm – 6pm Saturday 10am – 4pm
East Tilbury Village Hall, Princess Avenue, East Tilbury, Essex, RM18 8ST	Thursday 10am – 3.30pm Friday 10am – 3.30pm



Essex County Council, County Hall, Market Road, Chelmsford, CM1 1QH	Monday – Thursday 8.30am – 5.30pm Friday 8.30am – 5pm
Gillingham Library, 3 High Street, Gillingham, ME7 1BE	Monday – Friday 9am – 6pm Saturday 9am – 5pm
Higham Library, Villa Road, Higham, ME3 7BS	Monday 9am – 1pm Tuesday 2pm – 5.30pm Wednesday 9am – 1pm Thursday 2pm – 5.30pm Friday 9am – 1pm Saturday 10am – 2pm
Kings Farm Library, 100 Sun Lane, Gravesend, DA12 5HR	Monday – Wednesday 9am – 1pm, 2pm – 6pm Friday 9am – 1pm, 2pm – 6pm Saturday 10am – 2pm
Marling Cross Library, 266 MacKensie Way, Gravesend, DA12 5TY	Tuesday 9.30am – 1pm, 2pm – 5pm Thursday 9.30am – 1pm, 2pm – 5pm Friday 2pm – 5pm Saturday 2pm – 4pm
Meopham Library, Wrotham Road, Meopham, DA13 0AH	Monday – Friday 9am – 1pm, 2pm – 5pm Saturday 9am – 2pm
Shorne Woods Country Park, Brewers Road, Shorne, DA12 3HX	Monday – Sunday 9am - dusk
Southend Airport, Southend-on-Sea, SS2 6YF	Monday – Sunday 24 hours
Stanford-le-Hope Library, 26 High Street, Stanford-le-Hope, SS17 0HG	Tuesday 10am – 1pm, 2pm – 5pm Thursday 10am – 1pm, 2pm – 5pm Saturday 10am – 1pm
Strood Library, 133 High Street, Strood, ME2 4TJ	Monday – Friday 9am – 6pm Saturday 9am – 5pm
Thurrock Council Civic Offices, New Road, Grays, RM17 6SL	Monday – Thursday 8.45am – 5.15pm Friday 8.45am – 4.45pm
Upminster Library, 26 Corbets Tey Road, Upminster, RM14 2BB	Monday 10am – 8pm Tuesday 9am – 5pm Wednesday 9am – 5pm Thursday 10am – 8pm Friday 9am – 5pm Saturday 10am – 4pm



Next steps

22. We will collect and analyse all responses to the consultation before submitting the DCO application to the Planning Inspectorate.
23. We will record and carefully consider all comments received during consultation. Comments received will be taken into account in the future development of the project.
24. Where we consider it appropriate, and before submitting our DCO application, we may choose to consult further on certain changes to the project made in response to consultation feedback. The form of this consultation would be determined by the scale and impact of the proposed changes.
25. An explanation of how comments received have influenced our proposals (including feedback received at the previous stage of consultation) will be reported in our Consultation Report, which will accompany the DCO application as required by section 37(3)(c) of the Planning Act 2008.
26. To find out more about the project or to obtain copies of consultation documents, we can be contacted via the following methods:
 - Via the project website at www.lowerthamescrossing.co.uk or via the consultation website
 - Email: ltc@highwaysengland.gov.uk
 - Phone: 0300 123 5000
 - Post: Lower Thames Crossing, Woodlands, Manton Industrial Estate, Manton Lane, Bedford, MK41 7LW

For details as to how to respond to the consultation, please see paragraph 20 of this SoCC.

Data privacy notice

27. The following data privacy notice will be published alongside our consultation materials when we ask for information from consultees:

Highways England is committed to protecting your personal information. Whenever you provide such information we are legally obliged to use it in line with all applicable laws concerning the protection of personal data, including the General Data Protection Regulation (GDPR), which came into effect on 25 May 2018.

How will Highways England use the information it collects about you?

Highways England will use your personal data for a number of purposes, including the following:

- To analyse the feedback that you provide in response to our consultation



-
- To produce a summary report, based on our analysis of responses (individuals will not be identified in that report)
 - To write to you with updates about the outcomes of this consultation and other project developments
 - To keep up-to-date records of our interactions with individuals and organisations

Your information will be handled and used by the following recipients in order to record, analyse and report on feedback received:

- Highways England
- Traverse (who have been contracted by Highways England to analyse feedback to the consultation)
- The Planning Inspectorate (who will consider our application for permission to build LTC)

It is also possible that trusted third party providers, for example construction companies, may later use contact details provided in your response to communicate with you about the development of the project.

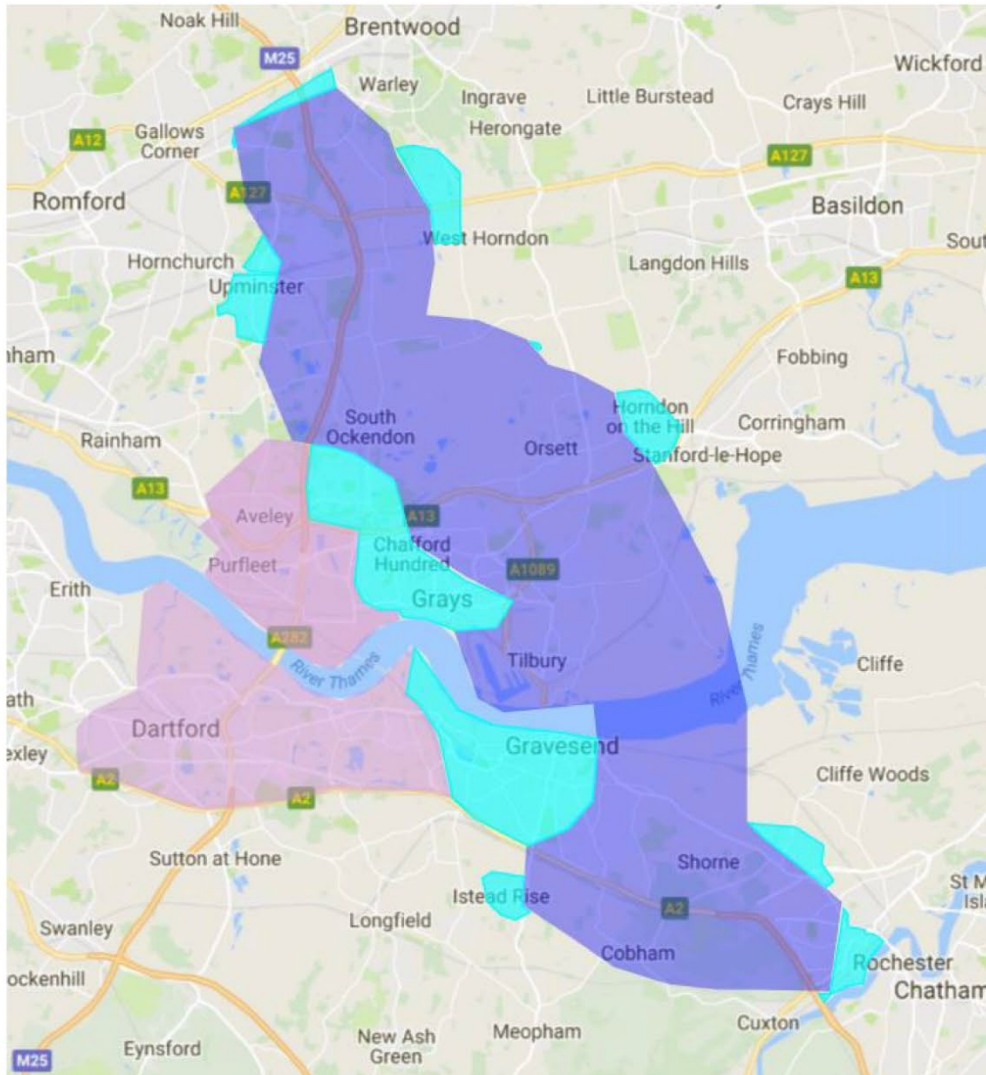
What rights do I have over my personal data?

Under the terms of the GDPR you have certain rights over how your personal data is retained and used by Highways England, including the right for it to be erased. For more information on these rights, please refer to our full data privacy statement: <https://highwaysengland.co.uk/terms-and-conditions/>.

Please note that unless you ask for your personal data to be removed from our records, we would retain it throughout the process of applying for a Development Consent Order and, if consent is awarded, until construction of the project is complete.



Appendix 1: Leaflet distribution area



The above map shows the area where we plan to distribute consultation leaflets. The area includes all properties within 2km of the route (shown in dark blue), with the area expanded to include additional communities (shown in light blue and pink). From north to south, the areas where we have expanded our distribution area are listed below:

- Harold Wood and Great Warley
- Little Warley and Childerditch
- Cranham and Upminster wards



-
- Hamlet south of Bulphan
 - Hordon on the Hill
 - South Ockendon, North Stifford and Grays
 - Thurrock
 - Dartford
 - Gravesend
 - Higham
 - Istead Rise
 - An area of Strood

Appendix 2: Statutory notices and paid advertising

Based on our understanding of newspaper circulations in the vicinity of the project, we intend publishing Section 47 statutory notices in the *Essex Chronicle*, *Kent Messenger* and the *Thurrock Gazette*.

Section 48 statutory notices will be published in the same local newspapers as the Section 47 notices, as well as in the *London Gazette* and at least one national newspaper.

In addition to the publication of the above statutory notices, we will place paid advertising in some local newspapers.

If you need help accessing this or any other National Highways information, please call **0300 123 5000** and we will help you.

© Crown copyright 2022.

You may re-use this information (not including logos) free of charge in any format or medium, under the terms of the Open Government Licence. To view this licence:

visit www.nationalarchives.gov.uk/doc/open-government-licence/

write to the **Information Policy Team, The National Archives, Kew, London TW9 4DU**, or email psi@nationalarchives.gsi.gov.uk.

Mapping (where present): © Crown copyright and database rights 2022 OS 100030649. You are permitted to use this data solely to enable you to respond to, or interact with, the organisation that provided you with the data. You are not permitted to copy, sub-licence, distribute or sell any of this data to third parties in any form.

If you have any enquiries about this publication email info@nationalhighways.co.uk or call **0300 123 5000***.

*Calls to 03 numbers cost no more than a national rate call to an 01 or 02 number and must count towards any inclusive minutes in the same way as 01 and 02 calls.

These rules apply to calls from any type of line including mobile, BT, other fixed line or payphone. Calls may be recorded or monitored.

Printed on paper from well-managed forests and other controlled sources when issued directly by National Highways.

Registered office Bridge House, 1 Walnut Tree Close, Guildford GU1 4LZ

National Highways Company Limited registered in England and Wales number 09346363